

CNDP1 Antibody (Center)
Purified Rabbit Polyclonal Antibody (Pab)
Catalog # AP20621c**Specification**

CNDP1 Antibody (Center) - Product Information

Application	WB,E
Primary Accession	Q96KN2
Reactivity	Human, Mouse, Rat
Host	Rabbit
Clonality	Polyclonal
Isotype	Rabbit IgG

CNDP1 Antibody (Center) - Additional Information**Gene ID** 84735**Other Names**

Beta-Ala-His dipeptidase, CNDP dipeptidase 1, Carnosine dipeptidase 1, Glutamate carboxypeptidase-like protein 2, Serum carnosinase, CNDP1, CN1, CPGL2

Target/Specificity

This CNDP1 antibody is generated from a rabbit immunized with a KLH conjugated synthetic peptide between 128-142 amino acids from the Central region of human CNDP1.

Dilution

WB~~1:1000

E~~Use at an assay dependent concentration.

Format

Purified polyclonal antibody supplied in PBS with 0.09% (W/V) sodium azide. This antibody is purified through a protein A column, followed by peptide affinity purification.

Storage

Maintain refrigerated at 2-8°C for up to 2 weeks. For long term storage store at -20°C in small aliquots to prevent freeze-thaw cycles.

Precautions

CNDP1 Antibody (Center) is for research use only and not for use in diagnostic or therapeutic procedures.

CNDP1 Antibody (Center) - Protein Information**Name** CNDP1 ([HGNC:20675](#))**Synonyms** CN1, CPGL2**Function** Catalyzes the peptide bond hydrolysis in Xaa-His dipeptides, displaying the highest

activity toward carnosine (beta-alanyl-L- histidine) and anserine (beta-alanyl-3-methyl-histidine).

Cellular Location

Secreted.

Tissue Location

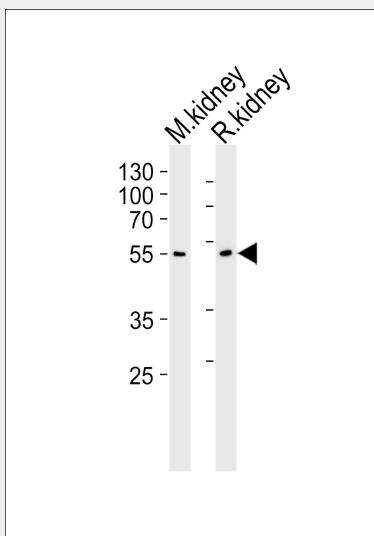
Found in serum and adult nervous central system. Absent in serum from patients with homocarnosinosis

CNDP1 Antibody (Center) - Protocols

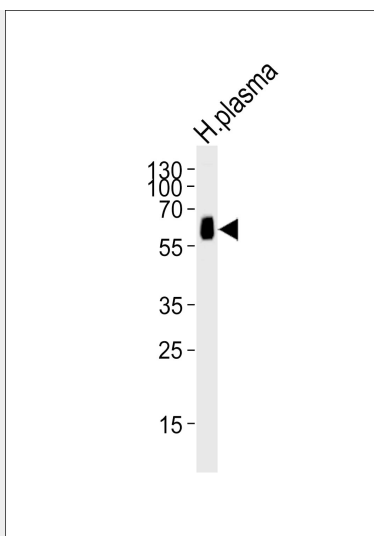
Provided below are standard protocols that you may find useful for product applications.

- [Western Blot](#)
- [Blocking Peptides](#)
- [Dot Blot](#)
- [Immunohistochemistry](#)
- [Immunofluorescence](#)
- [Immunoprecipitation](#)
- [Flow Cytometry](#)
- [Cell Culture](#)

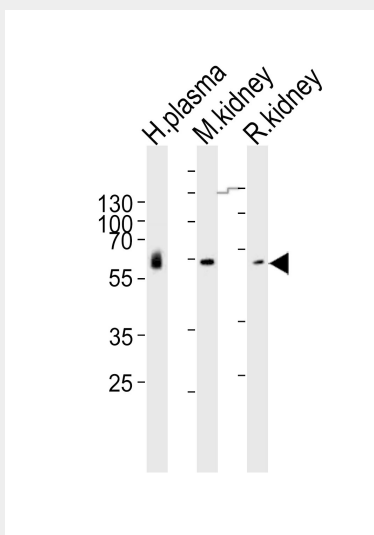
CNDP1 Antibody (Center) - Images



Western blot analysis of lysates from mouse kidney and rat kidney tissue lysate (from left to right), using CNDP1 Antibody (Center) (RB43679). RB43679 was diluted at 1:1000 at each lane. A goat anti-rabbit IgG H&L (HRP) at 1:5000 dilution was used as the secondary antibody. Lysates at 35 µg per lane.



Western blot analysis of lysate from human plasma tissue lysate, using CNDP1 Antibody (Center)(Cat. #AP20621c). AP20621c was diluted at 1:1000. A goat anti-rabbit IgG H&L(HRP) at 1:10000 dilution was used as the secondary antibody. Lysate at 20ug.



Western blot analysis of lysates from human plasma, mouse kidney, rat kidney tissue lysate (from left to right), using CNDP1 Antibody (Center)(Cat. #AP20621c). AP20621c was diluted at 1:1000 at each lane. A goat anti-rabbit IgG H&L(HRP) at 1:10000 dilution was used as the secondary antibody. Lysates at 20ug per lane.

CNDP1 Antibody (Center) - References

- Chen J.M.,et al.Submitted (OCT-2001) to the EMBL/GenBank/DDBJ databases.
Janssen B.,et al.Diabetes 54:2320-2327(2005).
Clark H.F.,et al.Genome Res. 13:2265-2270(2003).
Nusbaum C.,et al.Nature 437:551-555(2005).
Lenney J.F.,et al.Clin. Chim. Acta 123:221-231(1982).